

STRIP PATTERN NOZZLES

Irrigate narrow turf and planter areas accurately with fixed arc strip nozzles.

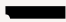





KEY BENEFITS

- Designed for accurate coverage of strip areas
- Available in a variety of models for unique, rectangular spaces
- Built to last in harsh conditions

OPERATING SPECIFICATIONS

- Recommended operating pressure: 2.1 bar; 210 kPa
- Pair with Pro-Spray PRS30 pop-up for pressure regulation to 2.1 bar; 210 kPa
- Warranty period: 2 years

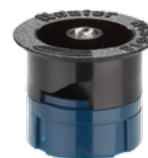
STRIP PATTERN NOZZLE PERFORMANCE DATA

| Arc | Pressure | | Width x Length m | Flow | |
|------------------------------------------------------------------------------------------------|------------|------------|---------------------|--------------------|------------|
| | bar | kPa | | m ³ /hr | l/min |
| LCS-515  | 1.0 | 100 | 1.2 x 4.2 | 0.10 | 1.7 |
| | 1.5 | 150 | 1.2 x 4.3 | 0.13 | 2.1 |
| | 2.1 | 210 | 1.5 x 4.5 | 0.15 | 2.5 |
| | 2.5 | 250 | 1.5 x 4.5 | 0.16 | 2.7 |
| | 3.0 | 300 | 1.5 x 4.5 | 0.17 | 2.8 |
| RCS-515  | 1.0 | 100 | 1.2 x 4.2 | 0.10 | 1.7 |
| | 1.5 | 150 | 1.2 x 4.3 | 0.13 | 2.1 |
| | 2.1 | 210 | 1.5 x 4.5 | 0.15 | 2.5 |
| | 2.5 | 250 | 1.5 x 4.5 | 0.16 | 2.7 |
| SS-530  | 1.0 | 100 | 1.2 x 8.5 | 0.21 | 3.5 |
| | 1.5 | 150 | 1.5 x 9.0 | 0.25 | 4.2 |
| | 2.1 | 210 | 1.5 x 9.1 | 0.30 | 5.0 |
| | 2.5 | 250 | 1.5 x 9.1 | 0.33 | 5.5 |
| SS-918  | 1.0 | 100 | 2.4 x 5.2 | 0.27 | 4.5 |
| | 1.5 | 150 | 2.7 x 5.5 | 0.33 | 5.5 |
| | 2.1 | 210 | 2.7 x 5.5 | 0.39 | 6.5 |
| | 2.5 | 250 | 2.7 x 5.5 | 0.43 | 7.1 |
| CS-530  | 1.0 | 100 | 1.2 x 8.5 | 0.21 | 3.5 |
| | 1.5 | 150 | 1.5 x 9.0 | 0.25 | 4.2 |
| | 2.1 | 210 | 1.5 x 9.1 | 0.30 | 5.0 |
| | 2.5 | 250 | 1.5 x 9.1 | 0.33 | 5.5 |
| ES-515  | 1.0 | 100 | 1.1 x 4.2 | 0.10 | 1.7 |
| | 1.5 | 150 | 1.2 x 4.3 | 0.13 | 2.1 |
| | 2.1 | 210 | 1.5 x 4.5 | 0.15 | 2.5 |
| | 2.5 | 250 | 1.5 x 4.5 | 0.16 | 2.7 |
| | 3.0 | 300 | 1.5 x 4.5 | 0.17 | 2.8 |

Bold = Recommended pressure



Left Corner Strip
Rectangle: 1.5 m x 4.5 m



Right Corner Strip
Rectangle: 1.5 m x 4.5 m



Side Strip
Rectangle: 1.5 m x 9.1 m



Side Strip
Rectangle: 2.7 m x 5.5 m



Center Strip
Rectangle: 1.5 m x 9.1 m



End Strip
Rectangle: 1.5 m x 4.5 m

RCS-515



NOZZLES